

**ENLIVEN**  **PUBLIC ART** **EOI**

*Nightlights Projection Lab*





*Photo: Departed, Yandell Walton 2016. Image by Andrew Hagan*

# PROJECT DESCRIPTION

Wagga Wagga City Council is seeking Expressions of Interest from leading Australian digital projection artists for a two (2) week residency in Wagga Wagga. The artist will be commissioned to deliver a site-specific work to be presented in September 2018, as well as lead the NightLights Projection Lab, where emerging Riverina artists will workshop and explore their creative digital ideas in a laboratory environment.

The intensive projection lab will include up to ten emerging Wagga Wagga and Riverina based artists, running for a minimum of five (5) days in Wagga Wagga within the period of 25 June - 8 July 2018 to be held in the Wagga Wagga Art Gallery E3 art space. Lab participants will be required to apply for the limited places.

At the conclusion of the lab, participants will propose site-specific projection work with a limited number commissioned by Wagga Wagga City Council. The lead artist will be expected to mentor the emerging artists through their commission.

A budget of \$20 000 (excluding GST) has been allocated for this commission and projection lab. The budget is to include all costs such as artist fees, production of artwork, travel, accommodation and public liability.

## PROPOSED PROCESS

This is an open request for leading projection artists with experience in facilitating workshops or teaching. To apply, artists must submit a CV highlighting their expertise in digital media with an emphasis on projections. Applicants should provide a detailed outline of the lab program including aspects of aesthetic, technical and practical skills and provide a budget for both the lab and projection.

The Public Art Advisory Panel (PAAP) will recommend the successful artist in a report to be submitted to Wagga Wagga City Council (WWCC) for both aspects of this commission.

The successful artist will be required to enter into a contract with Wagga Wagga City Council (WWCC) for the project.

## EOI SUBMISSION

- The aim of the EOI process is to enable the PAAP to assess the following items:
- The artist's experience in large scale projection work
- Experience in facilitating workshops and/or teaching
- The artist's ability to complete the work within schedule and on budget



## HOW TO APPLY

The EOI form can be accessed via [publicartwagga.com.au/apply](http://publicartwagga.com.au/apply). You can save as you go and return it later, and easily upload your documents.

Applications can be submitted until 3pm Monday 12 March 2018.

### Required support material

- A short biography and a comprehensive CV (up to three pages)
- Samples of your work
- Examples of recently completed commissions, including referee contact details for each commission
- Detailed projection lab program including indicative dates between 25 June – 8 July 2018
- Projection themes to be explored
- Detailed budget

For further information, your questions and EOI should be submitted to

Tracie Miller  
Cultural Officer  
Wagga Wagga City Council  
Email: [publicart@wagga.nsw.gov.au](mailto:publicart@wagga.nsw.gov.au)  
Post: Wagga Wagga City Council  
PO Box 20 Wagga Wagga NSW 2650  
Phone: 1300 292 442

## BUDGET

A budget of up to \$20 000 (ex GST) has been allocated for the NightLights Projection Lab and projection commission. All material costs, artist's fees, accompanying technicians, accommodations, travel, living expenses and insurances are to be covered by the budget. Artist fees are to be based on the current the NAVA rates and demonstrated in the budget. [https://visualarts.net.au/media/uploads/files/CHAPTER\\_7.pdf](https://visualarts.net.au/media/uploads/files/CHAPTER_7.pdf)

## SUBMISSION TIMEFRAME

The Expressions of Interest (EOI) period opens Monday 5 February 2018 and closes at 3pm EDST 12 March 2018.

The indicative key dates for the process are outlined below. Please note these dates are subject to change and installation dates will be discussed with the successful artist.

Artist brief released to public	5 February 2018
Submission closing date	12 March 2018
Recommendation to Council	26 April 2018
Artist notified	28 April 2018
Projection Lab	June / July 2018
Projection	September 2018

# BRIEF

## PROJECT OBJECTIVES

Wagga Wagga City Council purchased four Christie DHD800 digital projectors via the Public Art Reserve and the Public Art Advisory Panel for artistic content. Mapped together to create a 50m x 8m canvas across the Wagga Wagga Civic Centre, the Civic Precinct becomes a unique stage for digital media art. The artwork will be screened nightly from sun down and will end at 1am.

Three (3) NightLights Masterclasses have been held in recent years with internationally recognised Australian artists Craig Walsh (2015), Yandell Walton (2016) and Joel Zika (2017) leading the programs and creating projections.

This project will engage an Australian artist to transfer a new set of skills to local artists to build capacity in projection art to Wagga Wagga. The successful artist will lead participants through the NightLights Lab building capacity in digital media and projection art for up to 10 participants over a minimum five days. The lab will be held in Wagga Wagga Art Gallery's E3 art space with no cost associated with this booking. The lab is to focus on aesthetic, design, technical and practical skills as well as experimentation.

## SPECIFICATIONS

Four (4) Christie digital projectors are permanently installed on the banks of Wollundry Lagoon, mapping a 50m x 8m projection on the side of the Wagga Wagga Civic Centre with an overall projection resolution of 7230-1080 pixels.

The projectors are driven by the software Watchout. The template for the Civic Centre can be provided upon request, and the commissioned projections must be provided in this template.

Options for supplied video and resolutions include:

4 video files

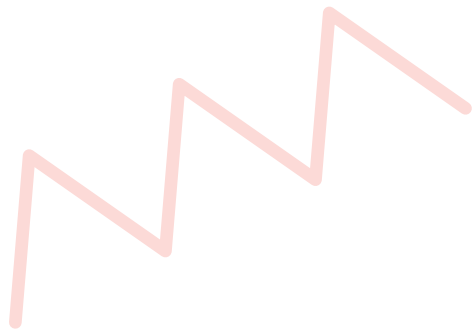
- 1920 x 1080 pixels each
- Pixel Aspect Ratio 1:1 (square pixels)
- (450 pixels will be cropped off one side of one of the videos)

2 video files

- 3616 x 1080 pixels each with
- Pixel Aspect Ratio 1:1 (square pixels)

1 video file

- 3616 x 1080 pixels
- Pixel Aspect Ratio 2:1 (Anamorphic)



## PARAMETERS

- The artwork must be inspired by the artist's time in Wagga Wagga
- The artwork must contribute to the visual interest of the precinct
- The artwork should not portray or depict material in a way which discriminates against or vilifies a person or section of the community on account of race, ethnicity, nationality, gender, age, sexual preference, religion, disability, mental illness or political belief
- The work is suitable for general audiences
- The artist must lead a minimum five (5) day lab
- The artwork should demonstrate artistic excellence
- The artist must supply evidence of a public liability policy of at least \$20 000 000. For further information on insurances refer to <https://visualarts.net.au/membership/join/>  
<https://www.duckforcover.com.au/minigen/>  
<http://www.flyingarts.org.au/Flying-Arts-Insurance-pg19119.html>

## WAGGA WAGGA PROFILE

The Wagga Wagga Local Government Area (LGA) is located in the Riverina region of New South Wales, a midway point between Sydney and Melbourne. Wagga Wagga is the largest inland city in New South Wales on the banks of the Murrumbidgee River. Traditional land owners, the Wiradjuri people, travelled the region for thousands of years following the cycle of ceremonies and seasons. Today, Wagga remains an ideal meeting spot, with new ceremonies and events to take part in.

Whilst Wagga Wagga LGA has an estimated population of 64 085 people, over 90% of people reside in the Wagga Wagga urban area (or township). Although less than 10% of people live in the rural villages and surrounding rural areas, this population base is stable with most rural villages comprising viable and energetic communities. Wagga Wagga supports a regional catchment population of over 150,000 people.

The LGA's population is projected to rise to almost 80,000 people in the next twenty years, with most of this increase occurring within the Wagga Wagga urban area. As well as the Wagga Wagga urban area, the LGA comprises the rural villages of Collingullie, Currawarna, Humula, Ladysmith, Tarcutta, Uranquinty, Oura, Mangoplah, and Galore.

It is a city of diverse functions and communities of interest and provides a regional focus for major commercial, retail and business industries. In addition, the City is a major centre for educational services including Charles Sturt University and TAFE NSW Riverina Institute, defence services (RAAF Base and Army Recruitment Training Facility) and NSW Government Public Services.

The Murrumbidgee River is central to the city's identity. Close to the centre of town and part of the Riverside precinct, the iconic Wagga Beach is where you can take a (very!) refreshing dip or simply lie on the grass by the bend in the river and stare at the sky.

Wagga Wagga is widely known for its sporting culture (commonly referred to as "The City of Good Sports") and a strong and vibrant arts community and a diverse range of cultural facilities and events. Established events across the year include FUSION Multicultural Street Festival, the Wagga Wagga Food and Wine Festival and Wagga Comedy Fest. Each year, the calendar grows with new and exciting event offerings such as Fitz Live, Fresh. Ideas. Insights. Perspectives. a month long program of talks, workshops and events and The Half Way Print Fest.

With its glass façade and strong lines, the Civic Centre on the banks of the Wollundry Lagoon houses the Wagga Wagga Art

Gallery and National Art Glass Collection, and the original Council Chambers on the street front is home to the Museum of the Riverina.

This convenient cluster of cultural collections means you can wander through the building, view the latest art exhibitions and extensive resident collections in the Gallery, discover more about Wagga's history in the Museum or sit with a cuppa and catch up on the latest newspapers, magazines or books in the sun-filled Library.

Some other features of the city include Wagga Wagga Botanic Gardens complete with zoo and free-flight aviary, Oasis Regional Aquatic Centre, Lake Albert, Livingstone National Park, Willans Hill Reserve.

An abundance of fresh local produce sourced from the surrounding region can be found in restaurants, bars and eateries across the city providing fantastic culinary experiences. The Riverina is also one New South Wales' largest wine producing regions offering a range of tasting experiences.

## WAGGA POPULATION

The City of Wagga Wagga acknowledges the first people, the Wiradjuri Nation. It has a culturally diverse community of an estimated 64 085 residents, recorded at the 2016 census. Wagga Wagga has a higher than the state average percentage of persons in the 12-24 age group. 10.9% of the population is 18-24 years of age, over 3% higher than the percentage average of other regional areas often attributed to the presence of Charles Sturt University and the Defence community. The City is a recognised Refugee Welcome Zone.

### A rich and vibrant community

Wagga Wagga City Council is committed to the development of Wagga Wagga LGA as a thriving, innovative and connected regional centre, where culture and creativity engage and involve the whole community.



## Our vision for the future

“In 2040 Wagga Wagga will be a thriving, innovative, connected and inclusive community on the Murrumbidgee. Rich in opportunity, choice, learning and environment, Wagga is a place where paths cross and people meet.”

*Wagga View Community Strategic Plan 2040 (2017)*

Wagga Wagga City Council has made a significant investment in cultural infrastructure including:

- Four permanently installed projectors featuring an annual curated program
- An array of parks and recreation spaces with amphitheaters and staging
- A substantial permanent public art collection featuring sculpture and street art
- Wagga Wagga Art Gallery and National Art Glass Gallery
- Wagga Wagga City Library
- Wagga Wagga Civic Theatre
- Museum of the Riverina (two sites)

## PUBLIC ART PRINCIPLES

The development and implementation of public art projects and initiatives through the Public Art Plan is governed by the following principles:

- Enhance the visual and environmental beauty of the City of Wagga Wagga.
- Celebrate the culture and heritage of the traditional custodians of the land, the Wiradjuri people.
- Communicate the unique stories, spirit and heritage of the whole of the City of Wagga Wagga, including its villages and neighbourhoods.
- Promote the social and cultural diversity of the whole community.
- Highlight the unique characteristics and fragile ecosystems of the local natural environment.
- Develop projects at the highest levels of creativity, artistic excellence, and innovation.
- Challenge and stimulate audiences and the wider community.
- Support and enhance cultural tourism and the visitor economy.
- Actively collaborate with all key stakeholders, including state and federal government bodies, community groups and organisations, business and industry.
- Encourage access and participation from all of the community through creative experiences and placemaking.
- Ensure all projects and programs are carried out in a fair and transparent manner, and in accordance with industry and local government best practice.



## Contact

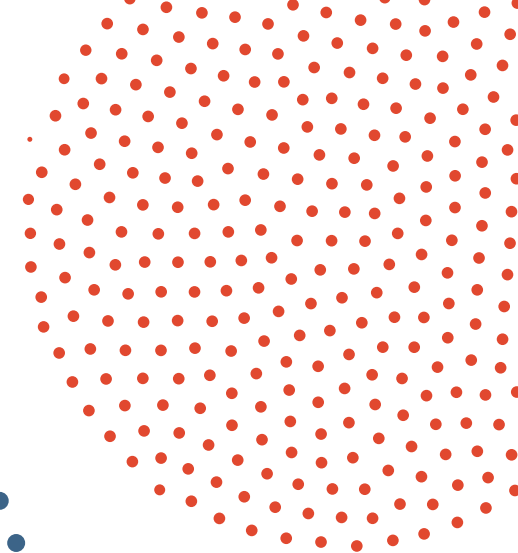
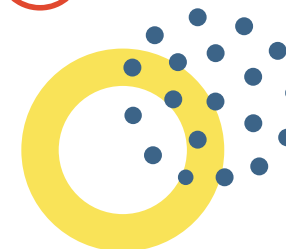
Tracie Miller  
Cultural Officer  
Wagga Wagga City Council  
Email: [publicart@wagga.nsw.gov.au](mailto:publicart@wagga.nsw.gov.au)  
Post: Wagga Wagga City Council  
PO Box 20 Wagga Wagga NSW 2650  
[www.wagga.nsw.gov.au/publicart](http://www.wagga.nsw.gov.au/publicart)  
Phone: 1300 292 442

## Support Documents

Enliven Public Art Plan 2017 - 2021  
Wagga View, Community Strategic Plan 2040  
General Conditions of Contract for the Supply of Goods

## Support Websites

NAVA Fees and Wages  
[https://visualarts.net.au/media/uploads/files/CHAPTER\\_7\\_-\\_2017\\_5.pdf](https://visualarts.net.au/media/uploads/files/CHAPTER_7_-_2017_5.pdf)





*Photo: Harmony, Craig Walsh 2015*



**ENLIVEN**

*Public Art Plan 2017-2021*